

CD207 Polyclonal Antibody
Catalog # AP73458**Specification**

CD207 Polyclonal Antibody - Product Information

Application	WB
Primary Accession	Q9UJ71
Reactivity	Human
Host	Rabbit
Clonality	Polyclonal

CD207 Polyclonal Antibody - Additional Information**Gene ID** 50489**Other Names**

CD207; CLEC4K; C-type lectin domain family 4 member K; Langerin; CD207

Dilution

WB~~Western Blot: 1/500 - 1/2000. ELISA: 1/20000. Not yet tested in other applications.

Format

Liquid in PBS containing 50% glycerol, 0.5% BSA and 0.09% (W/V) sodium azide.

Storage Conditions

-20°C

CD207 Polyclonal Antibody - Protein Information**Name** CD207**Synonyms** CLEC4K**Function**

Calcium-dependent lectin displaying mannose-binding specificity. Induces the formation of Birbeck granules (BGs); is a potent regulator of membrane superimposition and zippering. Binds to sulfated as well as mannosylated glycans, keratan sulfate (KS) and beta-glucans. Facilitates uptake of antigens and is involved in the routing and/or processing of antigen for presentation to T cells. Major receptor on primary Langerhans cells for Candida species, Saccharomyces species, and Malassezia furfur. Protects against human immunodeficiency virus-1 (HIV-1) infection. Binds to high-mannose structures present on the envelope glycoprotein which is followed by subsequent targeting of the virus to the Birbeck granules leading to its rapid degradation.

Cellular Location

Membrane; Single-pass type II membrane protein. Note=Found in Birbeck granules (BGs), which are organelles consisting of superimposed and zippered membranes

Tissue Location

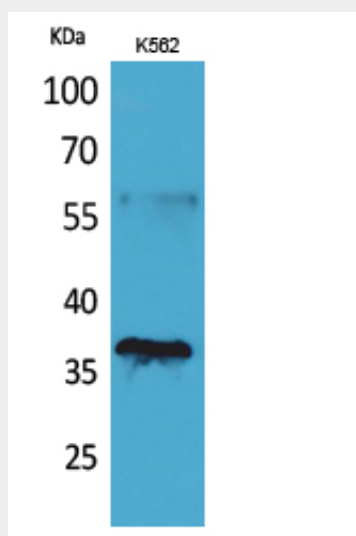
Exclusively expressed by Langerhans cells. Expressed in astrocytoma and malignant ependymoma, but not in normal brain tissues.

CD207 Polyclonal Antibody - Protocols

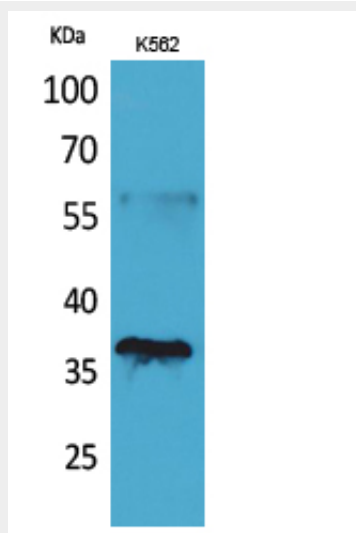
Provided below are standard protocols that you may find useful for product applications.

- [Western Blot](#)
- [Blocking Peptides](#)
- [Dot Blot](#)
- [Immunohistochemistry](#)
- [Immunofluorescence](#)
- [Immunoprecipitation](#)
- [Flow Cytometry](#)
- [Cell Culture](#)

CD207 Polyclonal Antibody - Images



Western Blot analysis of K562 cells using CD207 Polyclonal Antibody.. Secondary antibody was diluted at 1:20000



Western Blot analysis of K562 cells using CD207 Polyclonal Antibody.. Secondary antibody was diluted at 1:20000

CD207 Polyclonal Antibody - Background

Calcium-dependent lectin displaying mannose-binding specificity. Induces the formation of Birbeck granules (BGs); is a potent regulator of membrane superimposition and zippering. Binds to sulfated as well as mannosylated glycans, keratan sulfate (KS) and beta-glucans. Facilitates uptake of antigens and is involved in the routing and/or processing of antigen for presentation to T cells. Major receptor on primary Langerhans cells for *Candida* species, *Saccharomyces* species, and *Malassezia furfur*. Protects against human immunodeficiency virus-1 (HIV-1) infection. Binds to high-mannose structures present on the envelope glycoprotein which is followed by subsequent targeting of the virus to the Birbeck granules leading to its rapid degradation.